

Silt Fence Installation Guidelines

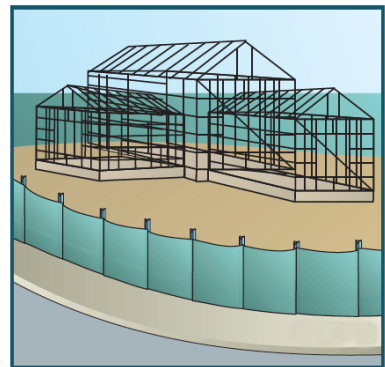
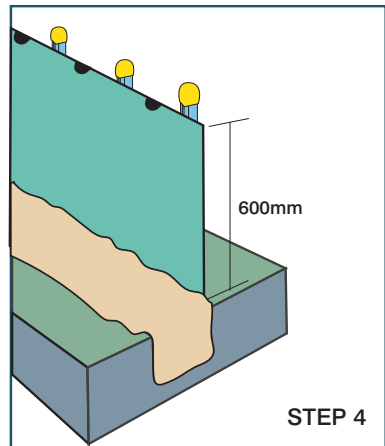
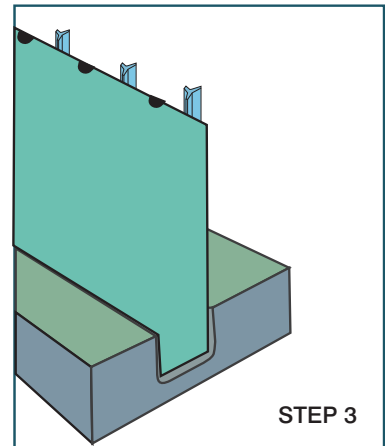
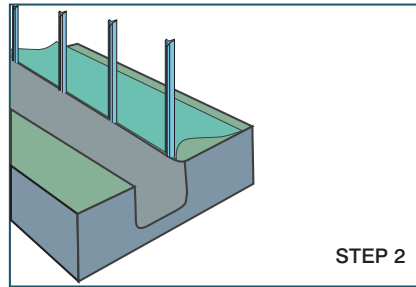
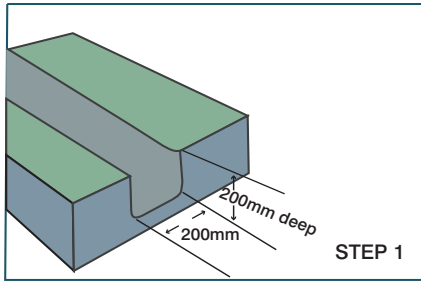
Sediment Control



QUALITY - SUPPORT - EXPERTISE



Silt Fence Installation Guidelines



Installation

STEP 1 Excavate a trench a minimum of 200mm wide and 200mm deep on the uphill side of the proposed line of silt fence.

STEP 2 Drive adequate length support posts to a depth (minimum 400mm) appropriate for the site conditions downhill of the trench.

- A.** Post spacing is typically at 2m centres with wire attached along the top between posts to assist with support of the silt fence.
- B.** Post spacing can be increased up to 4m centres if supported by 2.5mm diameter high tensile wire at mid height and along the top with hog rings, clips or pins every 150mm connecting the silt fence along the top wire.

STEP 3 Roll out silt fence and position up against the support posts and fold over top wire. Hog rings, clips or pins are used to attach the silt fence to the top wire (at the required spacing).

STEP 4 Bury bottom section along the base and up the side of the trench leaving a minimum exposed height of 600mm and backfill with soil. Compact to ensure good anchorage. Place safety caps on posts.

NOTE Installation to follow your local Regional Council guidelines for erosion control and sediment control.

Maintenance

Regular inspection of silt fence is required especially after each rainfall event. Make any necessary repairs and remove excessive silt deposits to reduce pressure on the silt fence.

NEW ZEALAND

AUCKLAND
(64) 9 634 6495

HAMILTON
(64) 21 732 178

NAPIER
(64) 21 916 736

CHRISTCHURCH
(64) 3 349 5600

AUSTRALIA

MELBOURNE
(03) 8586 9111

SYDNEY
(02) 8785 8800

NEWCASTLE
(02) 4951 2688

COFFS HARBOUR
(02) 6653 5706

PERTH
(08) 6305 0561

ADELAIDE
(08) 8162 5855

HOBART
(03) 6273 0511

BRISBANE
(07) 3279 1588

TOWNSVILLE
(07) 4774 8222

BUNDABERG
(07) 4155 9968

GOLD COAST
(07) 5594 8600

DARWIN
0407 523 669

0800 60 60 20

(Freephone NZ only)

GEOFABRICS.CO.NZ
GEOFABRICS.COM.AU

Follow
Geofabrics on



GEOFABRICS®

The information contained in this brochure is general in nature. In particular the content of this brochure does not take account of specific conditions that may be present at your site. Site conditions may alter the performance and longevity of the product and in extreme cases may make the product wholly unsuitable. Actual dimensions and performance may vary. If your project requires accuracy to a certain specified tolerance level you must advise us before ordering the product from us. We can then advise whether the product will meet the required tolerances. Where provided, installation instructions cover installation of product in site conditions that are conducive to its use and optimum performance. If you have any doubts as to the installation instructions or their application to your site, please contact us for clarification before commencing installation. This brochure should not be used for construction purposes and in all cases we recommend that advice be obtained from a suitably qualified consulting engineer or industry specialist before proceeding with installation. This brochure is current as at the date printed below. Geofabrics New Zealand Ltd may make amendments to this document at any time. Please refer to our website, or contact our nearest sales office to ensure you have the most current version. © Copyright held by Geofabrics New Zealand Ltd. All rights are reserved and no part of this publication may be copied without prior permission.