

TECHNICAL DATA SHEET:

BIOMAC CJ

Coir fibre matting



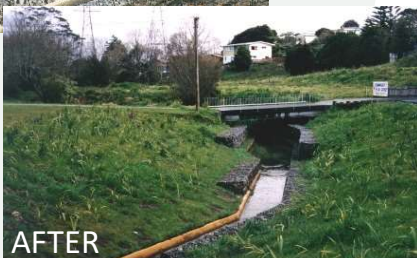
BEFORE



AFTER



BEFORE



AFTER

BIOMAC CJ provides initial erosion protection to bare seeded slopes from extremes of rain, wind and sun. Biomac CJ grades are composed of natural coconut husk fibre (coir) and incorporate a fully biodegradable jute mesh so they contain no plastic.

A good cover of natural vegetation is regarded as the most effective and environmentally acceptable method of erosion control and soil stabilisation on embankments, channels, and coastal dune areas. BIOMAC CJ gives nature a helping hand at the revegetation stage by providing:

Ground protection: at their most vulnerable stage, non-vegetated surfaces are protected from rain and wind erosion to reduce loss of top soil.

Seed Protection: newly-planted seeds are protected against wind and rain.

Moisture retention and rain penetration: rainwater run-off is minimised due to water retention of the fibre.

Soil and root insulation: the blanket insulates the soil and protects the early seed growth against extremes of temperature, thus ensuring higher germination and less die back.

Soil fertilisation: decomposition of the natural fibres within the blanket improves the soils organic content and permeability.

SECTOR SUITABILITY



BIODEGRADATION

The BIOMAC CJ grades of erosion control and re-vegetation blanket are a natural and medium term method for preventing soil erosion and re-establishing plant vegetation. Biodegradation is expected to take 1 to 2 years depending on climatic conditions and soil composition at the site.

APPLICATIONS

Erosion control and soil stabilisation

- Road embankments
- Sound barrier embankments
- Stream and canal banks under low hydraulic stresses.
- Sand dune conservation
- Grass spillways for dams and reservoirs
- Facings for "green" reinforced soil systems

Landscaping

- Golf courses, amenity areas, parks, and sports fields
- Quarries and landfills
- Pedestrian and vehicle access routes

SPECIFICATION

Description

Biomac CJ is a flexible mat matrix manufactured from 100% coir fibres randomly arranged to form a uniform layer, cotton stitched between two lightweight jute meshes.

Storage

Biomac CJ should be stored under cover in a dry location until installation.

Material Composition:

1. Top Layer - lightweight biodegradable jute mesh
2. Inner Layer - coir (coconut) fibre matting
3. Bottom Layer - lightweight biodegradable jute mesh

PRODUCT DATA	UNITS	CJ300	CJ450
Coir Density	g/m ²	300	450
Mat Thickness	mm	3 - 5	6 - 8
Roll Width	m	2.4	2.4
Roll Length	m	50	50
Roll Weight	kg	36	54

IMPORTANT NOTICE - DISCLAIMER - The information contained in this brochure is general in nature. In particular the content of this brochure does not take account of specific conditions that may be present at your site. Site conditions may alter the performance and longevity of the product and in extreme cases may make the product wholly unsuitable. Actual dimensions and performance may vary. If your project requires accuracy to a certain specified tolerance level you must advise us before ordering the product from us. We can then advise whether the product will meet the required tolerances. Where provided, installation instructions cover installation of product in site conditions that are conducive to its use and optimum performance. If you have any doubts as to the installation instructions or their application to your site, please contact us for clarification before commencing installation. This brochure should not be used for construction purposes and in all cases we recommend that advice be obtained from a suitably qualified consulting engineer or industry specialist before proceeding with installation. © Copyright held by Geofabrics Australasia Pty Ltd. All rights are reserved and no part of this publication may be copied without prior permission.